

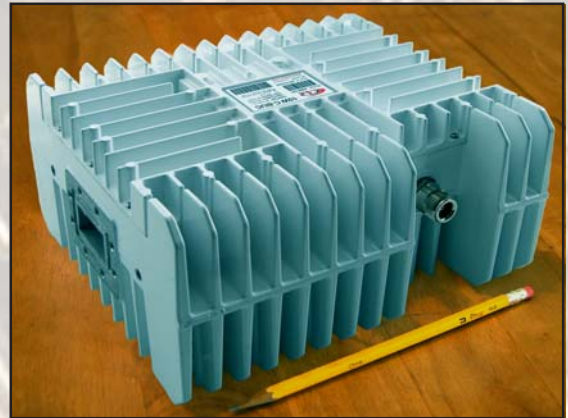


12W C-Band Block Up Converter

KEY FEATURES

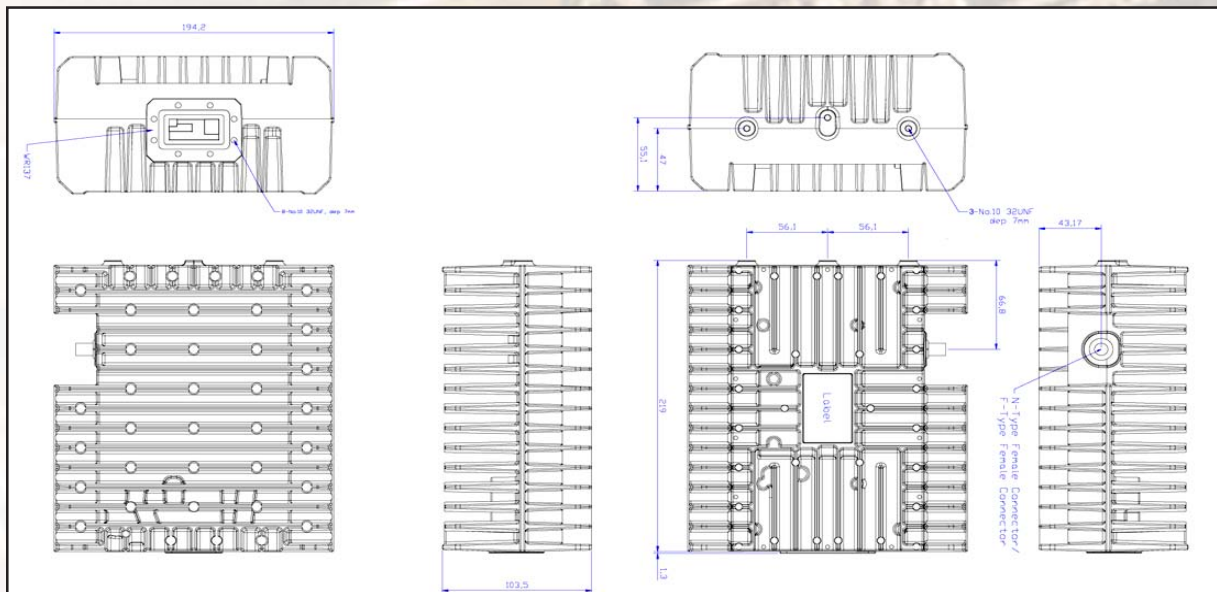
- ◆ Small package size and weight
- ◆ Feed horn mounting
- ◆ “No cooling fan” solution
- ◆ Input side connector
- ◆ Powered through IF cable Option
- ◆ Low Power Consumption (<79W)
- ◆ High Power Efficiency (12W min @P1dB over temperature)
- ◆ 24VDC/48VDC/48VDC via MS connector Input Power options
- ◆ Standard, Palapa and Extended C-Band Options
- ◆ RoHS Compliant
- ◆ Three-year Warranty

ABA12C / ABA12CF ABA12CP / ABA12CPF ABA12CE / ABA12CEF



This small and light weight 12W L-To C-Band Block Up Converter is designed to be mounted on the feed horn. High power efficiency resulting in low current consumption allows user to pass DC supply voltage via IF cable. The unit is ideal for network and point to point, data distribution, portable and emergency applications.

Mechanical Drawing





12W C-Band Block Up Converter

TECHNICAL SPECIFICATIONS		
RF Frequency	ABA12C ABA12CP ABA12CE	5.850 to 6.425 GHz 6.365 to 6.725 GHz 6.725 to 7.025 GHz
Local Oscillator	ABA12C ABA12CP ABA12CE	4.90 GHz, Non-inverting 5.29 GHz, Non-inverting 5.75 GHz, Non-inverting
IF Frequency	ABA12C ABA12CP ABA12CE	950 to 1.525 MHz 1.075 to 1.435 MHz 975 to 1.275 MHz
Output Power @ P1dB min over temp.		12W Linear (+41 dBm min.)
IF Connector		N-Type or F-Type
Power Supply	ABA12C ABB12C ABC12C	+18 VDC~+24 VDC via IF Cable 79 W max +36 VDC~+60 VDC via IF Cable 77 W max +36 VDC~+60 VDC via MS Conn. 77 W max
Output Interface		CPR-137 Grooved
Linear Gain		54 dB Min., 64 dB nominal
Gain Variation	Over 50 MHz Over 575 MHz	1.5 dB p_p 4.0 dB p_p
Over Operating Temperature		4.0 dB p_p @ Fixed Frequency
Requirement for External Reference		via IF cable
	Frequency	10 MHz (sine-wave)
	Input Power	-5 to +5 dBm @ Input port
Phase Noise		-30 dBc/Hz max. @ 10 Hz -60 dBc/Hz max. @ 100 Hz -70 dBc/Hz max. @ 1 kHz -80 dBc/Hz max. @ 10 kHz -90 dBc/Hz max. @ 100 kHz -100 dBc/Hz max @ 1 MHz
Noise Figure		20 dB max
Input V.S.W.R.		2 : 1 max
Output V.S.W.R.		2 : 1 max.
Mute		Shut off the BUC in case of L.O. unlocked
Input Interface	ABA12C ABA12CF	50 Ohm (N-type IF In) 75 Ohm (F-type IF In)
Temperature Range (ambient)		
	Operating	-40 deg C to +55 deg C
	Storage	-40 deg C to +75 deg C
Dimensions & Housing		217 (L) x 194 (W) x 103 (H) mm 8.7" (L) x 7.7" (W) x 4.1" (H)
Weight		4.2 kg (9.3 lbs) max